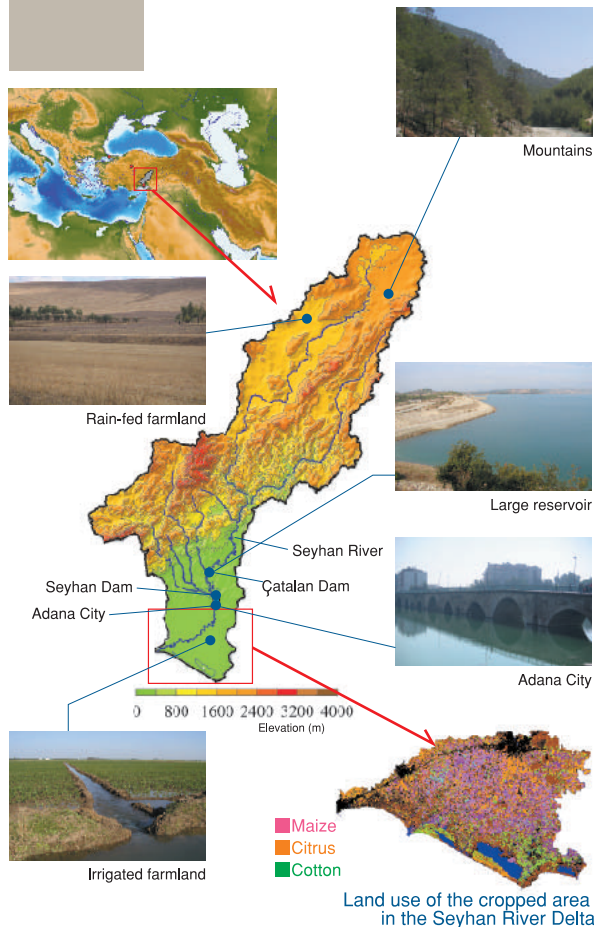


Case Study Area

Seyhan River Basin, Turkey



Located in the eastern-Mediterranean region of Turkey, the Seyhan River Basin is dominated by a Mediterranean climate, with most precipitation occurring in winter. Precipitation increases in accordance with elevation but is particularly low in the upper basin, which is dominated by a continental climate.

Annual rainfall: Lower basin:700mm—Middle basin:900mm—Upper basin:300mm
 Annual runoff: Min.: 191mm (3.7 km³)—Ave.: 284mm (5.5 km³)—Max.: 377mm (7.3 km³)
 Storage capacity: Seyhan Reservoir: 0.88 km³ Çatalan Reservoir: 1.6 km³
 Irrigated area in the delta: 133,000 ha; Maize: 45%; Citrus: 14%; Cotton: 5% (2003)

Rain-fed wheat is widespread in the upper hilly areas of the basin. Large-scale irrigated agriculture extends throughout the lower delta, where maize, citrus, cotton, wheat, and vegetables are cultivated. These crops depend on water supplied by reservoirs that store the runoff of winter rain and snow in the upper mountainous areas.

The ICCAP was implemented as one of the first-period projects of the RIHN.

Research Period: 2002-2007

Project Leader: Prof. Tsuguihiro Watanabe of the RIHN

Project participants included numerous researchers and engineers from various universities, institutes, and governmental organizations in Japan, Turkey, Israel, and Canada, including the Arid Land Research Center of Tottori University, a collaborating partner of the RIHN. The research was trans-disciplinary and included the fields of climatology, hydrology, agronomy, forestry, irrigation engineering, economics, and anthropology.



Research Institute for Humanity and Nature (RIHN)



Arid Land Research Center, Tottori University

Universities and institutes in Japan, Turkey, Israel, and Canada



The research in Turkey was carried out in cooperation with the Scientific and Technological Research Council of Turkey (Coordinator of the Turkish Team: Prof. Rıza Kanber of Çukurova University)

Research Institute for Humanity and Nature
Research Project



Research Project on Impact of Climate Changes on Agricultural Production System in Arid Areas



RIHN Research Project "Agriculture and Environment Interactions in Eurasia: Past, Present, and Future-The ten-thousand-year history" is implemented based on the experiences and outcomes of the ICCAP.
(Research Period: 2006-2011, Project Leader: Prof. Yo-Ichiro Sato of the RIHN)

RIHN Research Project ICCAP

E-mail: iccap@chikyu.ac.jp

<http://www.chikyu.ac.jp/iccap/>

National Institutes for the Humanities Research Institute for Humanity and Nature

457-4 Kamigamo-motoyama, Kita-ku, Kyoto 603-8047

Tel: +81-75-707-2100 Fax: +81-75-707-2106

E-mail: info@chikyu.ac.jp

<http://www.chikyu.ac.jp/>



Research Institute for Humanity and Nature